


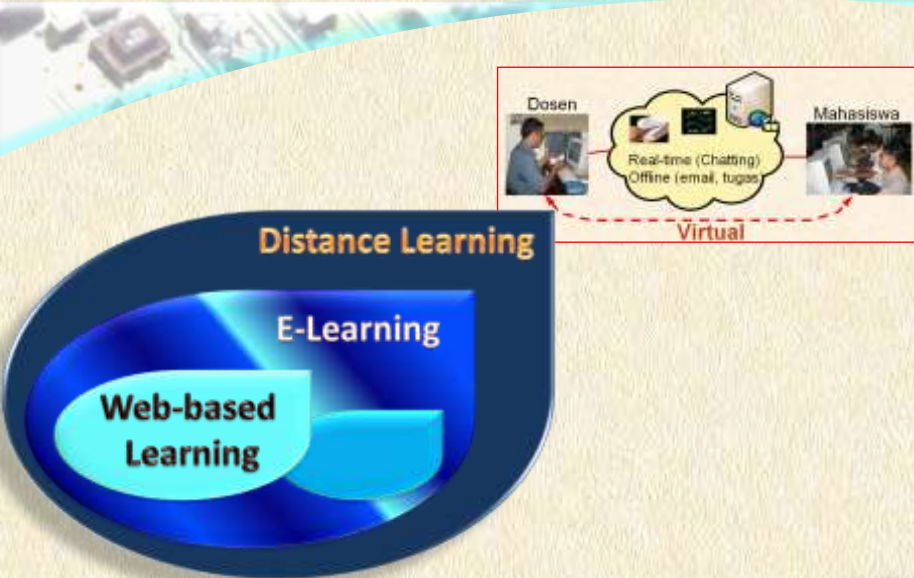
The e-learning Readiness Model as e-Learning Development Strategy



Priyanto
E-mail : priyanto@uny.ac.id
Mobile : 0811282609
Blog : <http://blog.uny.ac.id/priyanto>
Y ID : pri_uny

International Seminar on ICT in Education
Yogyakarta, 13th-14th February 2009

E-Learning: Electronic Delivery



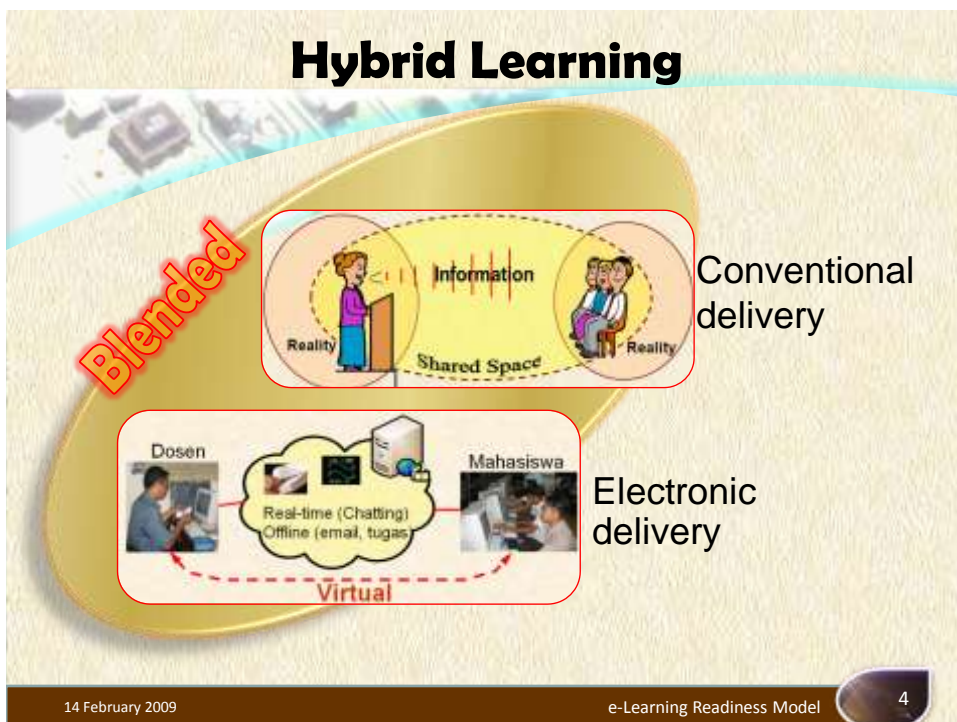
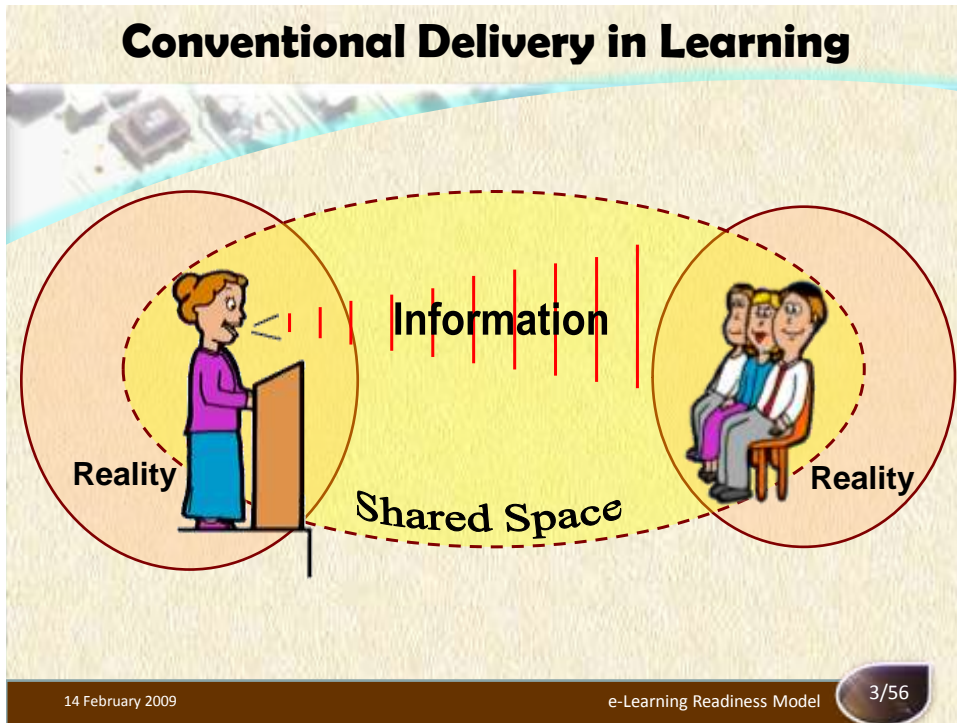
Distance Learning
E-Learning
Web-based Learning

Dosen Mahasiswa

Real-time (Chatting)
Offline (email, tugas)

Virtual

14 February 2009 e-Learning Readiness Model 2



Pengembangan E-learning



- Technology infrastructure
- Human Resource training



- Leadership
- Culture
- Regulation

14 February 2009

e-Learning Readiness Model

5

Warning in the Implementation of ICT

Old School
 +
Information Technology
 =
Old and Expensive School



Paradigm and **Behavior** Changes are required
 to make the benefits of ICT in education exceed
 the total investment and operational cost

(Eko Indrajit, 2007)

14 February 2009

e-Learning Readiness Model

6

Pengembangan E-learning

when great technology meets poor culture, the culture wins everytime."



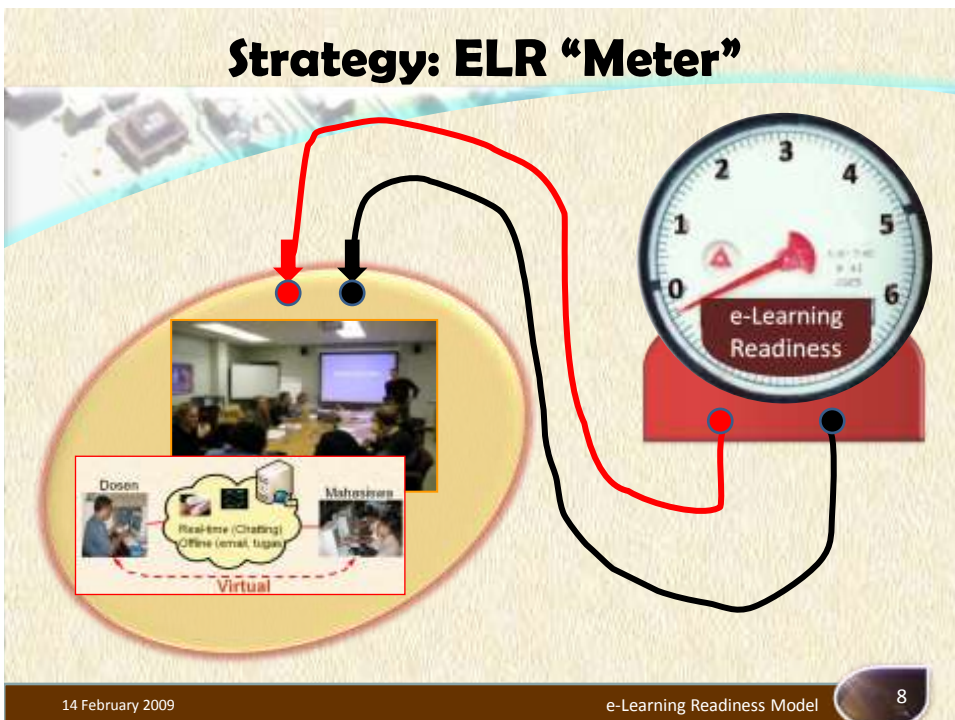
Diperlukan strategi yang baik dan komprehensif

14 February 2009

e-Learning Readiness Model

7

Strategy: ELR "Meter"



14 February 2009

e-Learning Readiness Model

8

e-Learning Readiness

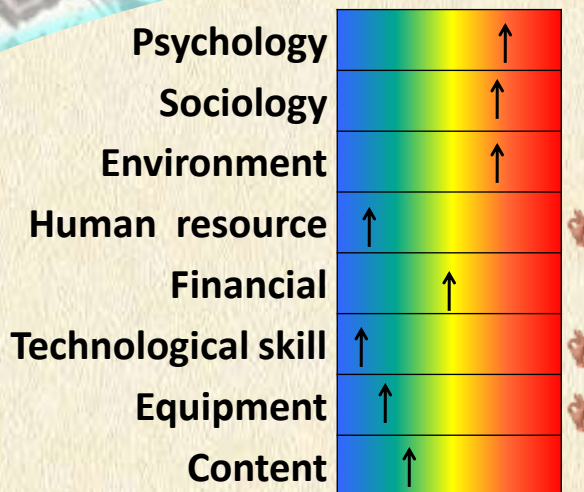
- ELR → kesiapan mental atau fisik suatu organisasi untuk suatu pengalaman pembelajaran.
- Model ELR dirancang untuk menyederhanakan proses dalam memperoleh informasi dasar yang diperlukan dalam mengembangkan e-learning.

14 February 2009

e-Learning Readiness Model

9

ELR Model (Chapnicks, 2000)

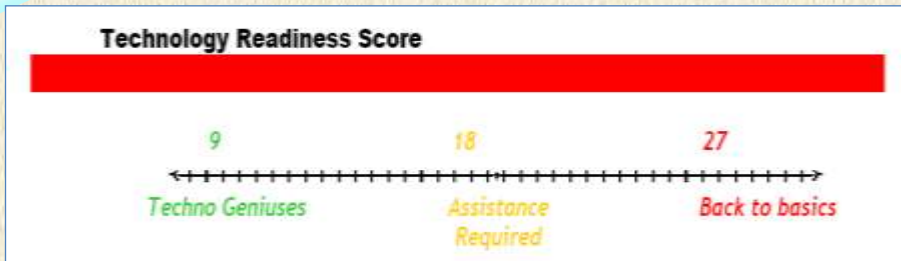


14 February 2009

e-Learning Readiness Model

10

ELR Score (Technology Readiness)

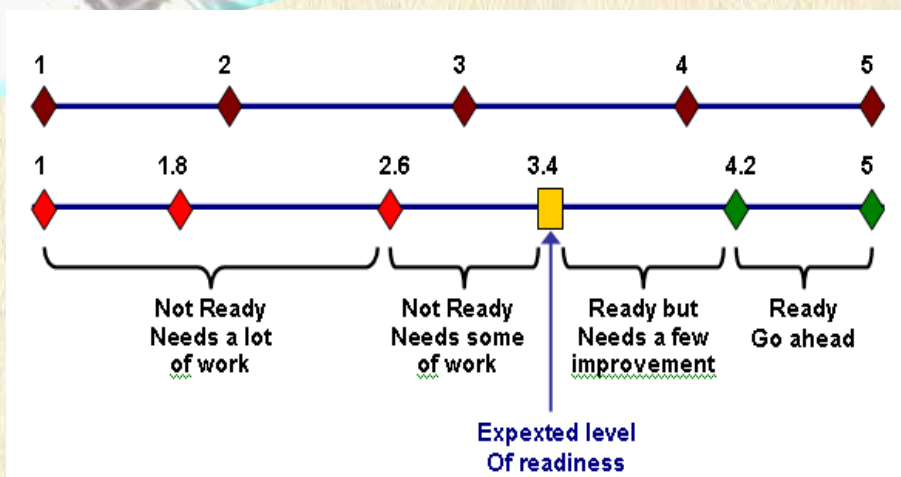


14 February 2009

e-Learning Readiness Model

11

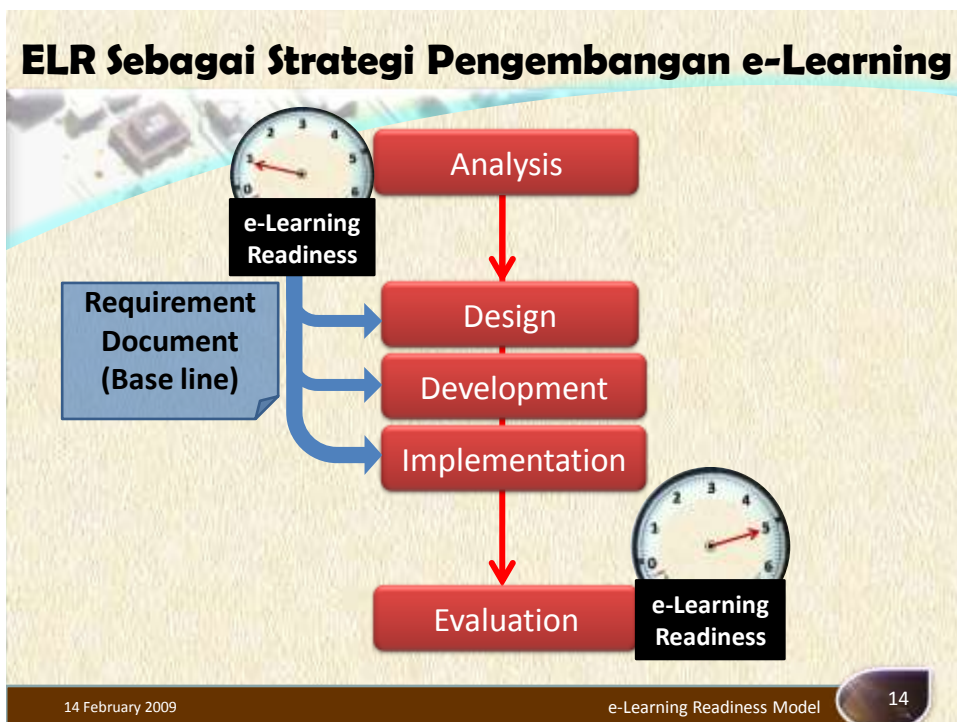
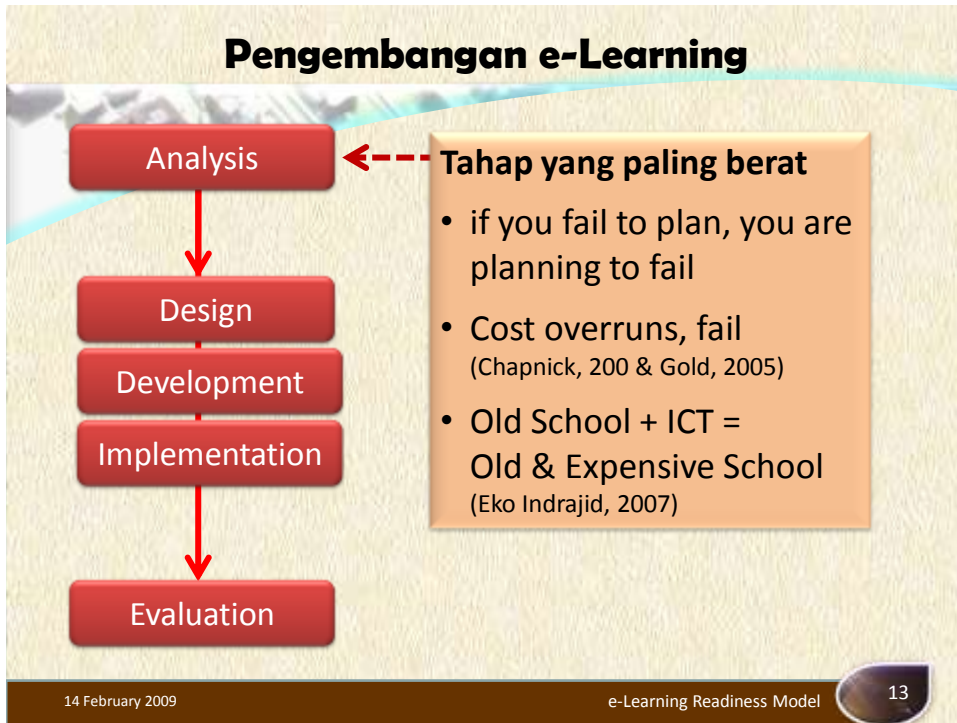
ELR Score (Aydm & Tasci, 2005)



14 February 2009

e-Learning Readiness Model

12



Siapa Menggunakan ELR Model?

- **Singapura** menggunakan Model ELR Chapnick untuk tahap analisis pengembangan e-Learning di sekolah-sekolah
- **Hongkong** Mengembangkan Model ELR untuk “mendiagnosa” Sekolah Menengah → Rekomendasi & bantuan
- **Croatia** menggunakan Model ELR untuk mengembangkan “Theoretical Model for Descission Making About E-learning” di PT → Analytic Hierarchy Process (AHP)
- **Bangladesh** → Analogi dengan Singapura
- **Indonesia**: OSOL, Jardiknas, 1 siswa 1 laptop → Orientasi pada infrastruktur teknologi

14 February 2009

e-Learning Readiness Model

15

The 2003 ELR Ranking (60 Countries)

- Singapore (5)
- Hongkong (19)
- Malaysia (25)
- Israel (26)
- Thailand (36)
- Philipines (43)
- Indonesia (53)

Economist Intelligence Unit & IBM Corporation (2003)

14 February 2009

e-Learning Readiness Model

16

The 2003 e-Learning Readiness Ranking

	Score (of 10)	Rank (of 60)		Score (of 10)	Rank (of 60)
Sweden	8.42	1	Mexico	5.96	31
Canada	8.40	2	Argentina	5.86	32
US	8.37	3	Poland	5.73	33
Finland	8.25	4	Brazil	5.63	34
South Korea	8.24	5	Slovakia	5.51	35
Singapore	8.00	6	Thailand	5.11	36
Denmark	7.98	7	Peru	5.10	37
UK	7.93	8	Colombia	5.05	38
Norway	7.91	9	Bulgaria	5.04	39
Switzerland	7.72	10	South Africa	4.96	40
Australia	7.71	11	Romania	4.91	41
Ireland	7.60	12	Venezuela	4.82	42
Netherlands	7.59	13	Philippines	4.80	43
France	7.51	14	Russia	4.65	44
Austria	7.49	15	India	4.56	45
Taiwan	7.47	16	China	4.52	46
Germany	7.45	17	Saudi Arabia	4.50	47
New Zealand	7.37	18	Ukraine	4.38	48 (tie)
Hong Kong	7.34	19	Ecuador	4.38	48 (tie)
Belgium	7.19	20	Turkey	4.33	50
Italy	7.07	21	Egypt	3.98	51
Spain	6.98	22	Kazakhstan	3.79	52
Japan	6.53	23	Indonesia	3.67	53 (tie)
Greece	6.52	24	Azerbaijan	3.67	53 (tie)
Malaysia	6.48	25	Sri Lanka	3.66	55
Israel	6.34	26	Algeria	3.52	56
Portugal	6.33	27	Vietnam	3.32	57
Chile	6.13	28	Pakistan	3.22	58
Czech Republic	6.11	29	Iran	3.06	59
Hungary	6.09	30	Nigeria	2.82	60

14 February 2009

e-Learning Readiness Model

17

Kesimpulan

- Model ELR merupakan manifestasi dari kesiapan seluruh komponen organisasi untuk mengadopsi e-learning.
- Model ELR tidak hanya mengukur kesiapan e-learning, tetapi (yang lebih penting) mengungkap area mana yang lemah dan memerlukan perbaikan.
- Pada tahap Analisis → ELR sebagai base line.
- Pada tahap Evaluasi → ELR sebagai pengukur keberhasilan.

14 February 2009

e-Learning Readiness Model

18

